

Lansdowne Place

Hove

LEXTONS /
SALES
LETTINGS
AUCTIONS
COMMERCIAL



About the property

Located in the heart of Hove, this charming split-level two-bedroom flat offers a fantastic opportunity to enjoy coastal living just a short walk from the beach. Ideally positioned near Western Road and its wide range of shops, cafes, and restaurants, the property boasts a spacious living area that opens out onto a generous terrace balcony with beautiful sea views.

The accommodation comprises one well-sized double bedroom and a second, smaller room ideal as a home office or study. A separate kitchen comes fully equipped with all white goods, while the bathroom features a full suite including an overhead shower. This light-filled flat blends comfort, convenience, and character in one of Hove's most sought-after locations.

Early viewings are advised.

Lansdowne Place Hove

£1,750 Per month



2

BEDROOM

1

RECEPTION

1

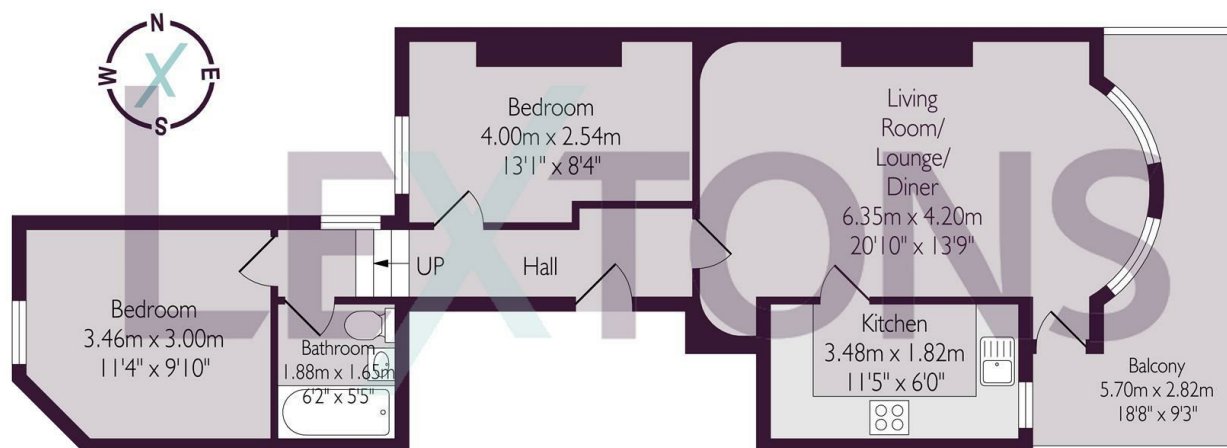
BATHROOM



SCAN HERE TO VIEW ALL AVAILABLE PROPERTIES



First Floor



Approximate gross internal floor area 59.6 sq m/ 641.6 sq ft

Whilst every care has been taken to ensure accuracy, dimensions are approximate and for illustrative purpose only.

Created for Lextons. All rights reserved

Energy Efficiency Rating		
	Current	Potential
Very energy efficient - lower running costs		
(92 plus) A		
(81-91) B		
(69-80) C		
(55-68) D		
(39-54) E		
(21-38) F		
(1-20) G		
Not energy efficient - higher running costs		
England & Wales		EU Directive 2002/91/EC